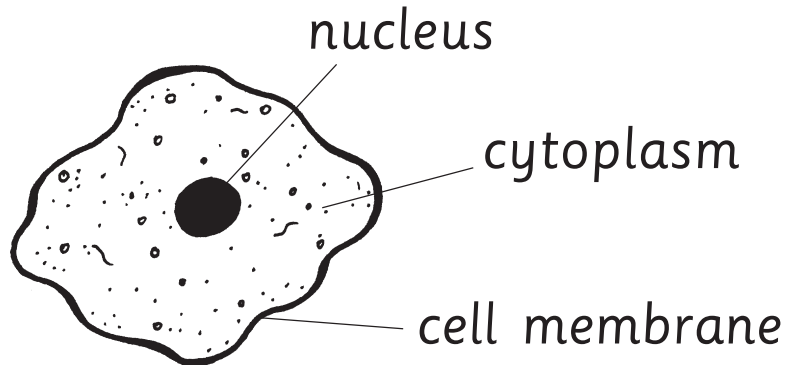


Cells

All living things are made of cells.
The drawing below shows an animal cell.
All animal cells (except red blood cells)
have the three parts shown below.

Animal cell



1. Circle the things that are part of an animal cell.



nucleus

circle

cell membrane

number

cytoplasm

cylinder

2. Finish the sentences below using words from the diagram.

The _____ controls the actions of a cell.

_____ is the jelly-like matter inside a cell.

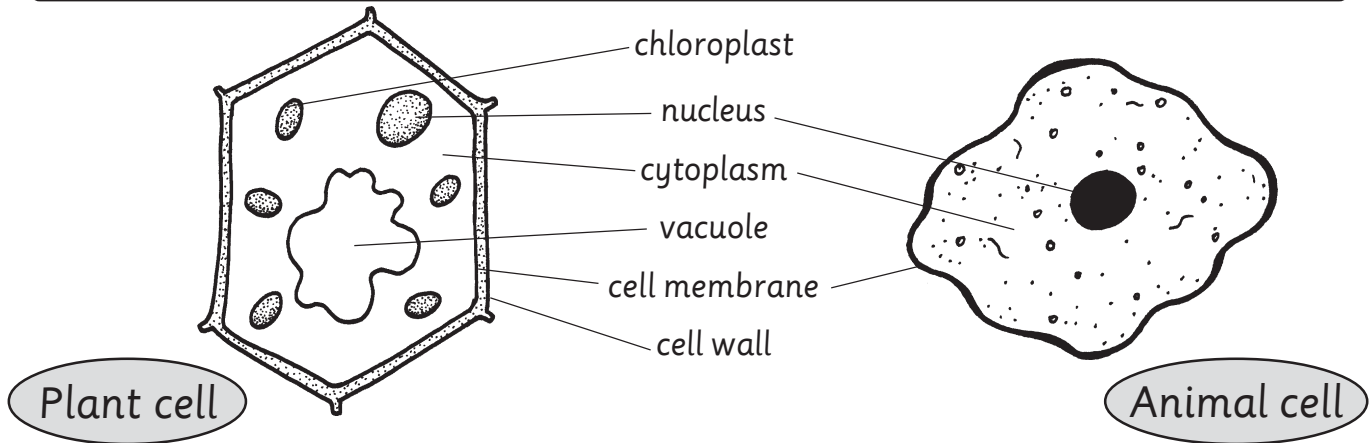
3. Write what this word means.



cell _____

Cells and tissues

Living things are made of microscopic building blocks called cells. The diagrams below show how plant and animal cells differ. Similar cells grouped together make tissue.



1. Write each cell feature shown above on the table below.

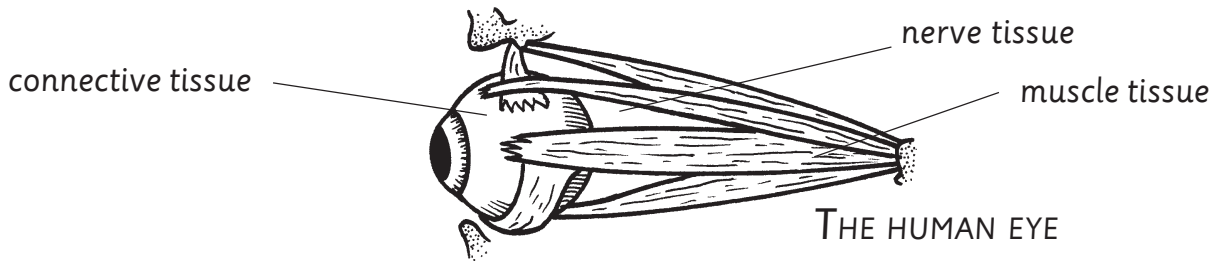
Found only in plant cells	Found in both animal and plant cells

2. Connect each type of eye tissue to the job it does.

sends information to the brain

forms the 'white' of the eye

allows the eyeball to move



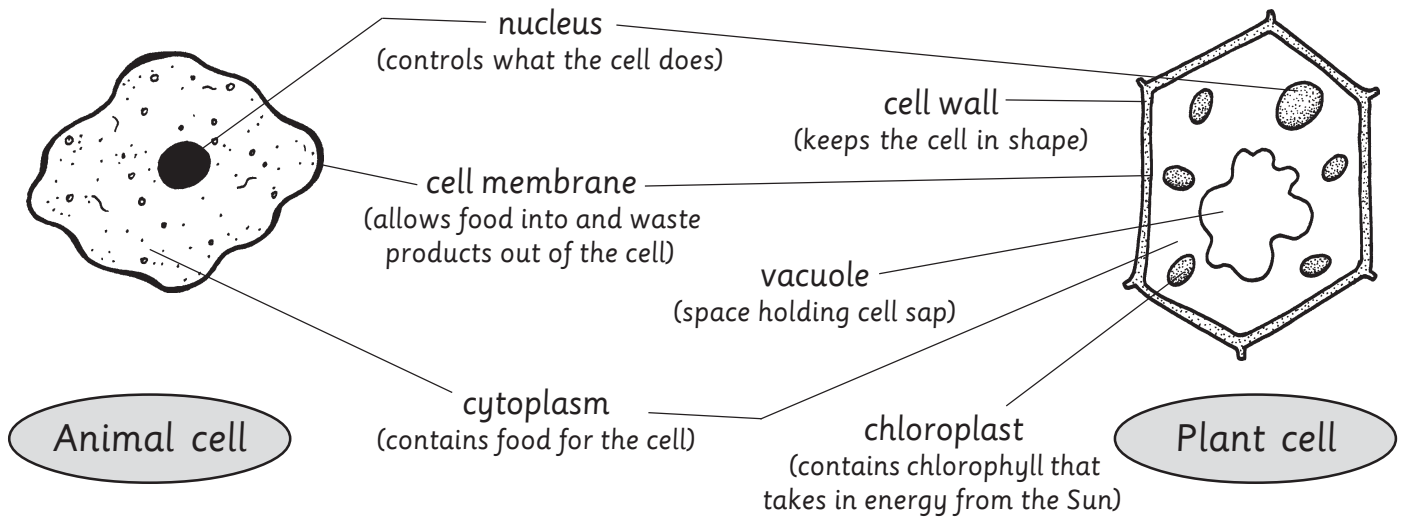
3. Write what these words mean.

cell _____

tissue _____

Cells, tissues and organs

All living things are composed of microscopic units called cells. The diagrams below show how plant and animal cells differ.



- Which part of a cell:
 - controls what the cell does? _____
 - allows food in and waste products out? _____

Similar cells grouped together make tissue. Several different tissues make an organ. Roots, stems, leaves and flowers are all different kinds of plant organs. The heart, lungs, stomach and liver are all different kinds of animal organs.

- Write each of these organs in their correct column on the table.

leaf	lungs
root	stem
heart	liver
flower	stomach



Animal organ	Plant organ

- Write what these words mean.



tissue _____

organ _____